

### Specifications

Model	SX-180	
<b>Measurements</b>	<b>Metric</b>	<b>US</b>
Working height maximum*	56.86 m	186 ft
Platform height maximum	54.86 m	180 ft
Horizontal reach maximum	24.38 m	80 ft
Below ground reach	0.61 m	2 ft
<b>A</b> Platform length	0.91 m	3 ft
<b>B</b> Platform width	2.44 m	8 ft
<b>C</b> Height - stowed	3.05 m	10 ft
<b>D</b> Length - stowed	16.18 m	53 ft 1 in
Length - transport (jib tucked under)	13 m	42 ft 8 in
<b>E</b> Width - axles retracted	2.49 m	8 ft 2 in
Width - axles extended	5.03 m	16 ft 6 in
<b>A</b> Wheelbase - axles retracted	5.03 m	16 ft 6 in
Wheelbase - axles extended	4.72 m	15 ft 6 in
<b>G</b> Ground clearance - center	0.38 m	1 ft 3 in

### Productivity

Lift capacity	340 kg	750 lbs
Platform rotation	160°	160°
Vertical jib rotation	135°	135°
Horizontal jib rotation	60°	60°
Turntable rotation	360° continuous	
Turntable tailswing - axle retracted	1.14 m	3 ft 9 in
Turntable tailswing - axle extended	1.06 m	3 ft 6 in
Drive speed - stowed	4.02 km/h	2.5 mph
Drive speed - out of stowed		
below 38.10 m (125 ft)	0.65 km/h	0.4 mph
above 38.10 m (125 ft)	0.17 km/h	0.1 mph
Gradeability - stowed**	35%	35%
Turning radius - axle retracted: inside	6.28 m	20 ft 7 in
outside	8.56 m	28 ft 1 in
Turning radius - axle extended: inside	3.02 m	9 ft 11 in
outside	7.34 m	24 ft 1 in
Controls	12 V DC proportional	
Tyres	445/65D 22.5 18 ply foam-filled	

### Power

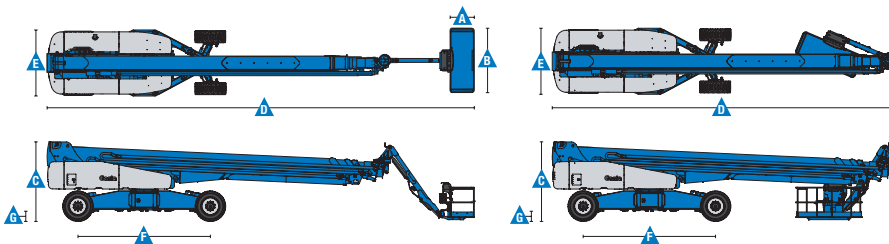
Power source	Deutz TD 2011 L04i turbo diesel 4-cylinder 74hp (55kW) Stage IIIA Deutz TCD2.2 L3 turbo diesel 3-cylinder 74hp (55 kW) Stage V	
Auxiliary power unit	12 V DC	12 V DC
Hydraulic tank capacity	416 L	110 gal
Fuel tank capacity	189.3 L	50 gal

### Weight\*\*\*

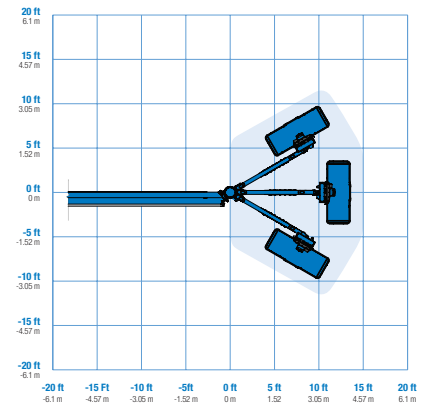
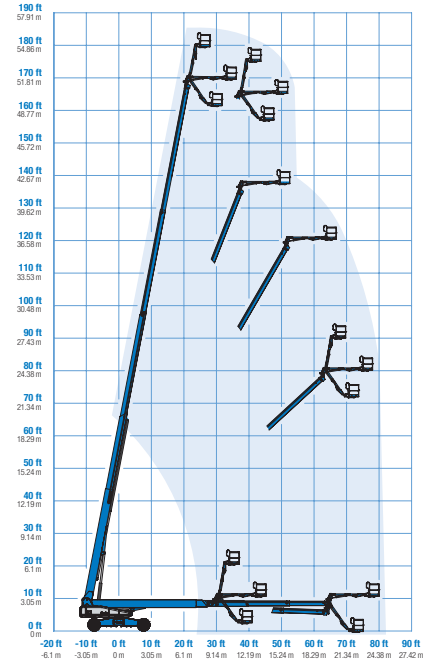
4WD	24,948 kg	55,000 lbs
-----	-----------	------------

### Standards Compliance

EU Directives: 2006/42/EC - Machinery  
(harmonized standard EN280:2013+A1:2015);  
2004/108/EC (EMC);  
2000/14/EC (Outdoor Noise)



### Range Of Motion SX-180



\* The metric equivalent of working height adds 2 m to platform height. U.S. adds 6 ft to platform height.

\*\* Gradeability applies to driving on slopes. See operator's manual for details regarding slope ratings.

\*\*\* Weight will vary depending on options and/or country standards.

### Features

Standard Features	Easily Configured To Meet Your Needs	Options & Accessories
-------------------	--------------------------------------	-----------------------

#### Measurements

##### SX-180

- 57 m (186 ft) working height
- 24.40 m (80 ft) horizontal reach
- 340 kg (750 lb) lift capacity

#### Productivity

- Self-leveling platform
- 160° Hydraulic platform rotation
- Proportional joystick controls
- Hydraulic oil cooler
- Thumb rocker steering
- Chassis tilt drive function cut-out
- Drive enable system
- AC power to platform
- Horn
- Hour meter
- Tilt alarm
- Descent alarm
- Alarm package
- 360° continuous turntable rotation
- Positive traction drive
- Two speed wheel motors
- Four wheel high angle steer
- Four steering modes: front, rear, crab and coordinated
- Four wheel brakes
- Ground control box cover
- Welder Ready package
- Engine status display
- Telematics-Ready Connector
- Lift Connect™ Telematics
- Lift Guard™ Contact Alarm
- Lift Tool™ Work Tray

#### Power

- All engines are emissions compliant
- 7.5 kW generator
- 415V/240V/50Hz (Europe)
- 110V/55V/50Hz (UK)
- 12 V DC auxiliary power
- Anti-restart engine protection
- Auto engine fault shutdown
- Intake air heater
- Engine gauge display

#### Platform

- 2.44 m (8 ft) tri-entry platform with side swing gate (standard)

#### Jib

- 3.05 m (10 ft) rotating jib

#### Engine Options

- Deutz TD 2011 L04i turbo diesel 4-cylinder 74hp (55kW) Stage IIIA
- Deutz TCD2.2 L3 turbo diesel 3-cylinder 74hp (55 kW) Stage V

#### Drive/Steer

- 4 x 4 (standard)
- 4 wheel steer (standard)

#### Axles

- X-Chassis™ extendable axles (standard)

#### Tyres

- Rough terrain foam-filled (standard)

#### Productivity Options

- Half-mesh platform inserts
- Platform auxiliary top rail
- Hostile environment package<sup>(1)</sup>
- Dual axis joystick steering
- Tool tray
- Work lights package (2 on chassis, 2 on platform)<sup>(1)</sup>
- Biodegradable Hydraulic Oil<sup>(1)</sup>
- Airline to Platform<sup>(1)</sup>
- Anemometer
- Chassis tilt lift function cut-out
- Lockable platform control box covers<sup>(1)</sup>
- Track & Trace<sup>(2)</sup> (GPS unit providing machine location & operating information)
- Operator Protective Structure<sup>(3)</sup>
- Genie® Tech Pro™ Link Hand-held Diagnostics Device

#### Power Options

- AC generator packages, both 7,5 kW (120V/50Hz with dual sockets in platform - 240-415V/50Hz 3 phase with 5 pole 3 phase socket and 240V socket)
- Cold Weather Packages<sup>(1)</sup>
- Diesel scrubber/spark arrestor muffler (catalytic muffler), Stage IIIA engine only<sup>(1)</sup>
- Intake air pre-cleaner<sup>(1)</sup>



<sup>(1)</sup> Factory-fit option only  
<sup>(2)</sup> Includes a first 2 years subscription  
<sup>(3)</sup> Aftermarket only

### Europe, Middle East, Africa and Russia Region

United Kingdom and Europe, T: +44 800 988 3739 (toll free) or +31 165 519 349

Middle East, Southern Africa, Russia and Turkey, T: +971 4 399 0381

Visit [www.genielift.com/en-gb/about-genie/locations](http://www.genielift.com/en-gb/about-genie/locations) to view our global locations list

### Worldwide Manufacturing And Distribution

Australia · Brazil · Caribbean · Central America · China · France · Germany · Italy · Japan · Korea · Mexico · Russia · Southeast Asia · Spain · Sweden · United Arab Emirates · United Kingdom · United States

Product specifications and prices are subject to change without notice or obligation. The photographs and/or drawings in this document are for illustrative purposes only. Refer to the appropriate Operator's Manual for instructions on the proper use of this equipment. Failure to follow the appropriate Operator's Manual when using our equipment or to otherwise act irresponsibly may result in serious injury or death. The only warranty applicable to our equipment is the standard written warranty applicable to the particular product and sale and we make no other warranty, express or implied. Products and services listed may be trademarks, service marks or trade names of Terex Corporation and/or their subsidiaries in the USA and many other countries. Genie is a registered trademark of Terex South Dakota, Inc. © 2020 Terex Corporation.

